

Sky Real Group



SKY

GROUP



Table of Content

About Us

Why To Invest

Payment Plan

Our Team

Location

Rapid Metro

Delivered Project

About Us

The sky real group founded by Krishan Madhan, Sachin Panchal and Sachin Chaudhary Where established in the year 2006. The base of Sky Real Group is on Delhi Jaipur Highway & Dehradun (Uttrakhand). The real estate has delivered more than 5 lakh Sq. Yd. Area.

The company has been a pioneer in this segment of real estate solution, delivering the most ideal infrastructure or weekend holiday house in the scenic and gorgeous location in North India.





Why to Invest

Facility's of our project

NEAR RIICO

- INDUSTRIAL AREA
- NEAR UPCOMING RAPID METRO
- NEAR UPCOMING GOVERNMENT OFFICES(KOTPUTLI-BEHROR DIST)
- NEAR UPCOMING BULLET TRAIN PROJECT
- 60 FEET GATE ENTRY
- RERA APPROVED
- BIDA APPROVED
- BANK LOAN FACILITY



Payment Plan

PLOT SIZES

100 SQ YARD

BSP

18,000 PER SQ YARD

IDC

999 PER SQ YARD

PLC

10% (FOR CORNER PLOT OR PARK FACING PLOT

PAYMENT

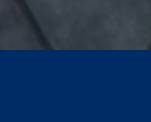
30% BOOKING AMOUNT

70% PAY WITHIN 3 MONTHS

BANK LOAN FACILITY



PREMIUM INTEGRATED TOWNSHIP



V CREATE STUDIOS

Our Team

The way a team plays as a whole determines its success. You may have the greatest bunch of individual stars in the world, but if they don't play together, the club won't be worth a dime.



Sky Real Group

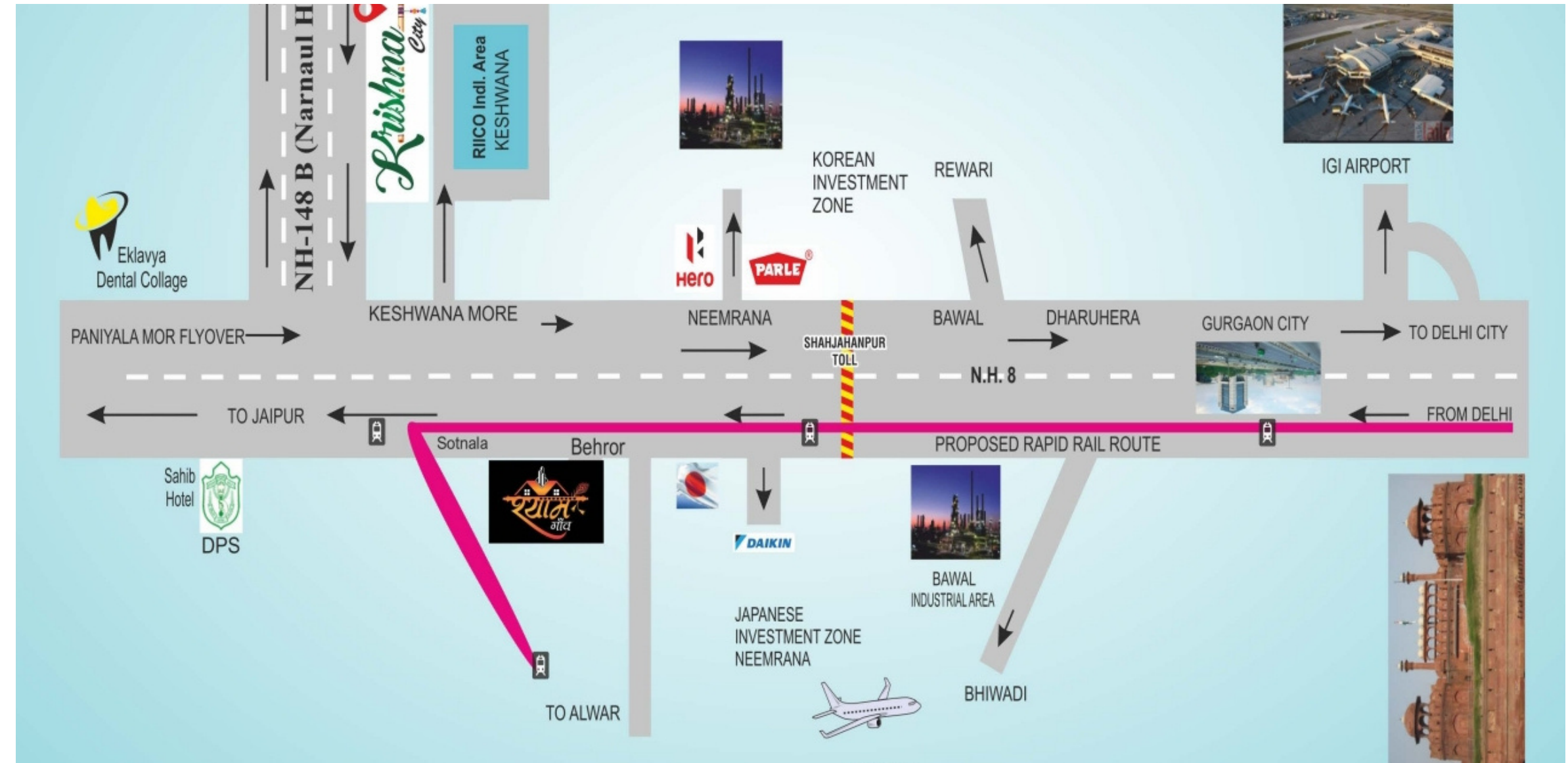
Delhi Team



Sky Real Group

Gurgaon Team

Location Map



Behror

Neemrana

Delhi

Project Location

10-15 KM

110-115 KM

Rapid & Bullet Metro

1.2 करोड़ करोड़ की लागत में 175 कीटाणुनाशक यंत्रों की खरीद

कोटपूतली जिला बनने की दौड़ में सबसे आगे : गृह राज्यमंत्री यादव

कोटपूतली जिला बनने की दौड़ में सबसे आगे गृह राज्यमंत्री यादव हैं। उन्होंने कहा कि जिला बनने के लिए 1.2 करोड़ करोड़ की लागत में 175 कीटाणुनाशक यंत्रों की खरीद की जाएगी।

जयपुर जिला शाहपुरा 25-11

राज्यीय महल्लेत के निर्देश व राज्यमंत्री काटदा की अनुमति पर कोलेवर में 50 बीघा भूमि पर बनेगा मिनी

जयपुर जिला शाहपुरा में 50 बीघा भूमि पर मिनी कोलेवर का निर्माण किया जाएगा।

आरआरटीएस की डीपीआर मंजूर, 70 मिनट में पहुंच सकेंगे दिल्ली से शाहजहांपुर होकर बहरौड़

आरआरटीएस की डीपीआर मंजूर, 70 मिनट में पहुंच सकेंगे दिल्ली से शाहजहांपुर होकर बहरौड़।

विद्युत पूरा न बनकर सब लोग विफल

कालूहेड़ा में 20 बीघा भूमि पर बनेगा जिला परिवहन कार्यालय

कालूहेड़ा में 20 बीघा भूमि पर जिला परिवहन कार्यालय का निर्माण किया जाएगा।

दिल्ली में आरएमएडएच हाई स्पीड रेल कार्रिडोर के सर्वे का कार्य शुरू

दिल्ली में आरएमएडएच हाई स्पीड रेल कार्रिडोर के सर्वे का कार्य शुरू।

टीएस की डीपीआर मंजूर, 70 मिनट में दिल्ली से शाहजहांपुर होकर

टीएस की डीपीआर मंजूर, 70 मिनट में दिल्ली से शाहजहांपुर होकर।



Line	Length (km)	Speed (km/h)
Delhi-Gurugram	28	160
Gurugram-SNB	120	160
Delhi-SNB	140	160

दिल्ली-आनवर रैपिड रेल का काम शुरू, 2026 तक होगा पूरा

दिल्ली-आनवर रैपिड रेल का काम शुरू, 2026 तक होगा पूरा।



Facility



GATED SOCIETY



60,40,30 FEET CC ROAD



CHILDREN PARK



INDOR GAMES



TEMPLE



CLUB HOUSE



STREET LIGHT



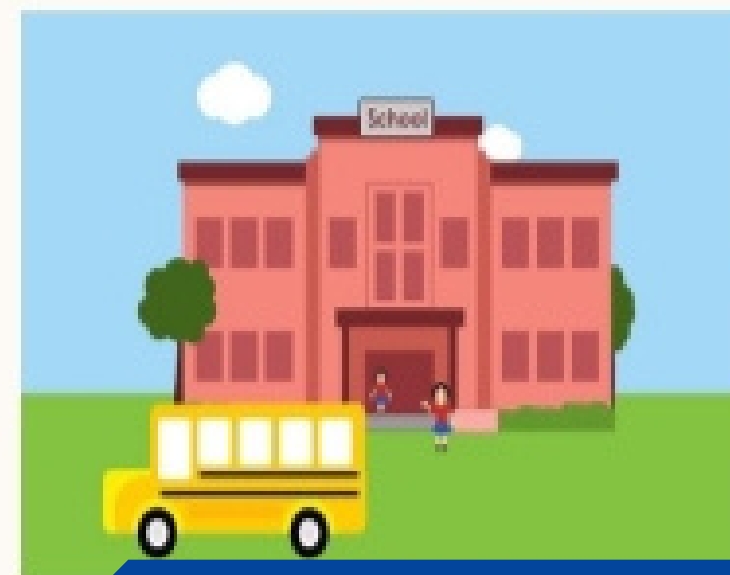
Cc tv camera



GYM



HOSPITAL



Nearby Hotels



KUURAKU JAPANESE HOTEL

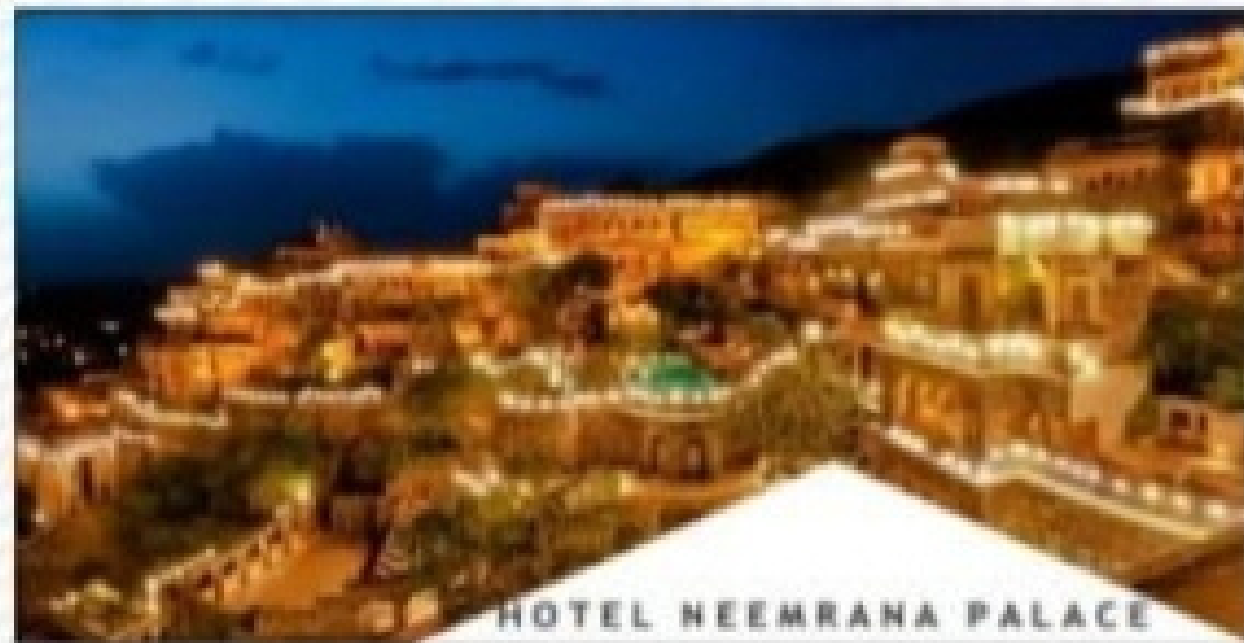
NEARBY
HOTELS



RAATH RAJDHANI TOURIST HOETL



OLD RAO HOTEL



HOTEL NEEMRANA PALACE



RAMADA HOTEL



HIROHAMA JAPANESE HOTEL



HIIT UNIVERSITY

Nearby Hospital & University



RAATH INTERNATIONAL SCHOOL



SAINT XAVIER SCHOOL



NEARBY HOSPITAL



DENTAL COLLEGE



RAATH UNIVERSITY

Map & Route

WORK IN PROGRESS

Detailed soil investigations were completed in 60km of elevated section and in 10km in underground section.

Initial pile load testing has been completed for eight locations in Udyog Vihar, Indraprastha elevated section. Geographical survey and alignment design completed for 10km in Aerocity-Indraprastha section.

Section	Length (km)	Mode	Speed (kmph)	Year of Completion
Delhi-Gurgaon	111	Underground	160	2018
Gurgaon-Rewari	180	Elevated	160	2019
Rewari-Alwar	82	Elevated	160	2020

Pre-Construction works start on Delhi-Gurugram-SNB RRTS corridor

Delhi-Gurgaon-Rewari RRTS corridor to be constructed in three stages. It will pass through the elevated and underground mode of transport and connect their depot with the RRTS network.

Stage 1: Delhi-Gurgaon (111 km) - Underground mode of transport.

Stage 2: Gurgaon-Rewari (180 km) - Elevated mode of transport.

Stage 3: Rewari-Alwar (82 km) - Elevated mode of transport.

Delhi-Sonapat-Panipat 111km

Delhi-Gharolabad-Meerut 82km

Delhi-Gurgaon-Rewari-Alwar 180km

RRTS - DELHI METRO INTEGRATION

PHASE IV METRO

- Aerocity
- Buzurg Crossing
- Indraprastha stations

RAILWAY STATIONS TO BE INTEGRATED

- Hazrat Nizamuddin
- Anand Vihar

ISBTs

- Sarai Kale Khan
- Hazrat Nizamuddin
- Anand Vihar

NCR LINKS

- Kaushambi bus depot
- Mohan Nagar bus depot and metro station (Red line)
- New Bus Abids bus depot and metro station
- Modinagar North bus depot
- Bhalsali bus depot (Meerut)
- Bengulpur bus depot (Meerut)
- Udyog Vihar (proposed extension of Gurugram Rapid Metro)
- Gurugram railway station
- Bawal (proposed metro and bus terminus)

WORK TO BEGIN IN FOUR YEARS

The proposed route

15 stations

- Dwarka Sec 21 (Delhi)
- IMT Manesar (Haryana)
- Rewari
- Behror (Rajasthan)
- Jaipur
- Ajmer
- Vijaynagar
- Bhilwara
- Chittorgarh
- Shahpura
- Udaipur
- Dungarpur
- Himmatnagar (Gujarat)
- Gandhinagar
- Ahmedabad

Length 886km

Maximum speed 350kmph

Delhi-Ahmedabad travel time Less than 4 hours

Construction to begin in 4 years

With Delhi's congested roads posing through Alwar, there is demand for fast RRTS services.

ON THE FAST TRACK

106-km-long metro rail project okayed by NCRTC in Dec 2018

160 kmph operational speed of metro; trains to run every 5-10 minutes at average speed of 100 kmph

Pre-Construction works start on Delhi-Gurugram-SNB RRTS corridor



Above Logos are s...

Delivered Project

- Sky City
- Sky Aagan
- Sky Aagan Phase - 2
- Prime Residency
- Krishna City
- Krishna City Phase - 2
- Smart Colony
- Krishna Tower
- River Sound City
- Sky Residency (Flats)

- **SHYAM GAON**

Contact Us

Phone : +91 8448 8481 32, +91 9800 9700 63

Email : sachin@skyrealgroup.com

Website : www.skyrealgroup.com



Thank You
Sky Real Group